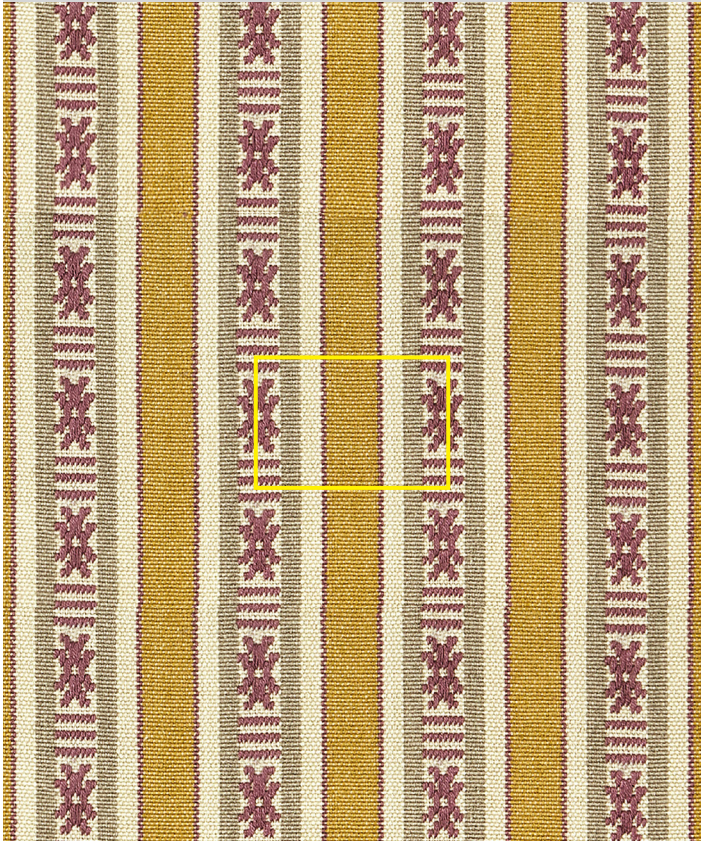


# namay samay

## Hor Seku Sandalwood | HS-07

Bhutanese style supplementary warp pattern bands (referred to as hor) woven on a frame loom in Bengal.



**Design** Hor Seku

**Colour** Sandalwood

**Code** HS-07

**Composition** 100% Silk

**Width** 123cm / 48.5in

**Repeat** 6cm (h) 3.5cm (v)  
2.5in (h) 1.5in (v)

**Weight** 320g/sqm

**Notes** .....  
.....  
.....  
.....



Hor Seku Sandalwood | HS-07

[www.namaysamay.com](http://www.namaysamay.com)

